

# DECEMBER HIGH HAND PAYOUTS

**THURSDAY, FRIDAY, & SATURDAY  
WIN UP TO \$1,000 EVERY 30 MINUTES**

**12:30PM – 12AM (QUALIFYING BEGINS AT 12PM)**

**IF THE HIGH HAND HITS ON 2/4 & 3/6 LIMIT HOLD'EM PLAY IT PAYS \$500,  
ON 4/8 LIMIT HOLD'EM & HIGHER OR 1/2NO LIMIT HOLD'EM PAYS \$750,  
AND 2/5 NO LIMIT HOLD'EM AND HIGHER PAYS \$1,000**

**\*EXCLUDES SATURDAY, DECEMBER 24, 2016**

---

**10:30AM – 12PM (QUALIFYING BEGINS AT 10AM)  
& 12:30AM – 2AM (QUALIFYING BEGINS AT 12AM)**

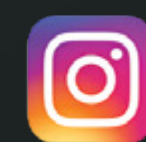
**THE HIGH HAND WILL PAY \$300 EVERY HALF HOUR. IF IT HITS ON 2/5NL OR  
HIGHER IT WILL PAY \$500 \*INCLUDES SATURDAY, DECEMBER 24, 2016**



@HardRockHolly



/Seminolehardrockhollywood



@HardRockHolly

**GAMBLE WITH CARE** \*Only in Jackpot eligible Texas Hold'em games. The minimum qualifier is a Full House Aces Full of Tens or better, \$10 in the pot, players need to use 1 hole card, and the player must win the pot. There will be rollovers during these bonus high hand periods. There is only one winning hand combination awarded per drawing time. Must be at least 18 years old to play. See brush stand for complete details. Persons who have been trespassed or banned by the Seminole Tribe of Florida or those who have opted into the self-exclusion program are not eligible. If you or someone you know has a gambling problem please call 1.888.ADMIT.IT.